



West Basin Marina

NAS Patuxent River, Maryland

301-342-3573

Hours of Operation

Memorial Day through Oct. 31

Monday-Sunday 8 a.m. - 4 p.m.

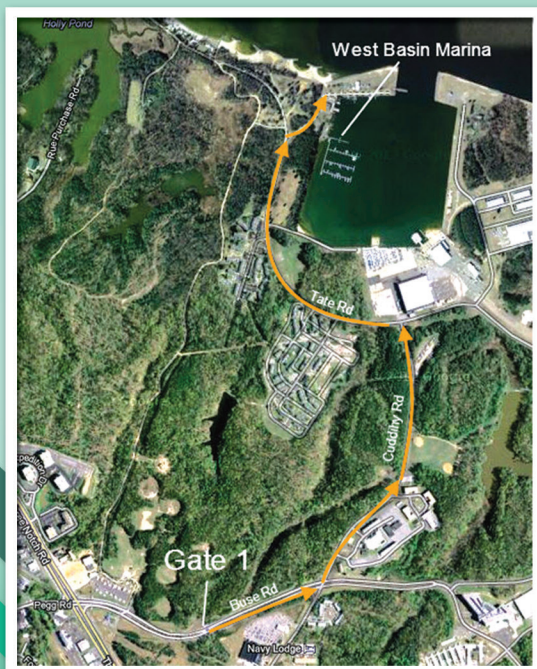
Nov. 1 through Memorial Day

Monday-Friday 8 a.m. - 4 p.m.

Saturday, Sunday and Holidays Closed

Directions

From Gate 1, turn left at the first traffic signal onto Cuddihy Road. Turn left on Tate Road, bear right at the fork onto Bauhof Road. Marina will be on your left, Bldg. 1599.



MORALE, WELFARE AND RECREATION

**WEST
BASIN
MARINA**

NAS PATUXENT RIVER, MD



Slip Rental and Dry Storage

- 198 pier slips and 44 floating dock slips
- All slips have water and electric hook ups
- Pump-out station located on the premises
- Bathhouse with showers and laundry



Pricing

	E1-E5	Others
Boat Haul <i>(per foot)</i>	\$9.90	\$11.00
Dry Storage <i>(per month/per foot)</i>	\$1.98	\$2.20
Slips Annual <i>(per foot)</i>	\$71.50	\$77.00
Slip Seasonal April-October <i>(per foot)</i>	\$49.50	\$55.00
Slip Monthly <i>(per foot)</i> <i>(call for availability)</i>	\$6.88	\$8.80
Transient <i>(per night)</i>	\$33.00	\$44.00
Catalina 17 <i>(per hour)</i>	\$9.90	\$11.00
Daily	\$34.65	\$38.50
Catalina 25 <i>(per hour)</i>	\$22.00	\$24.20
Daily	\$126.50	\$138.60
RV Storage <i>(per month/per foot)</i>	\$1.98	\$2.20

Boat Reservations

To reserve a boat or more information, please call the Marina at 301-342-3573.

Rentals

Canoe, kayaks and stand up paddle boards are available for rent.



Boat Ramp

The marina has a free double-wide boat launching ramp. The ramp is located next to Boathouse No. 3 (SAR Boathouse) on Bauhof Road. No trailer parking allowed in the ramp area or in the River's Edge Parking Lot. Use upper most level parking for trailers and along Tate Road. Guest parking is on upper two levels. Lower level is for our boat owners on the docks. No parking on grass areas where indicated. Violators will be ticketed.

Haul Out Services

West Basin Marina has haul out and storage capabilities. Haul out typically begins in October. Re-launch typically begins in April. Maximum capacity is 40 feet, depending on hull design.



Eligible Personnel

Active-duty, reserve and retired military and their family members (18 years and older) and DoD civilians.

